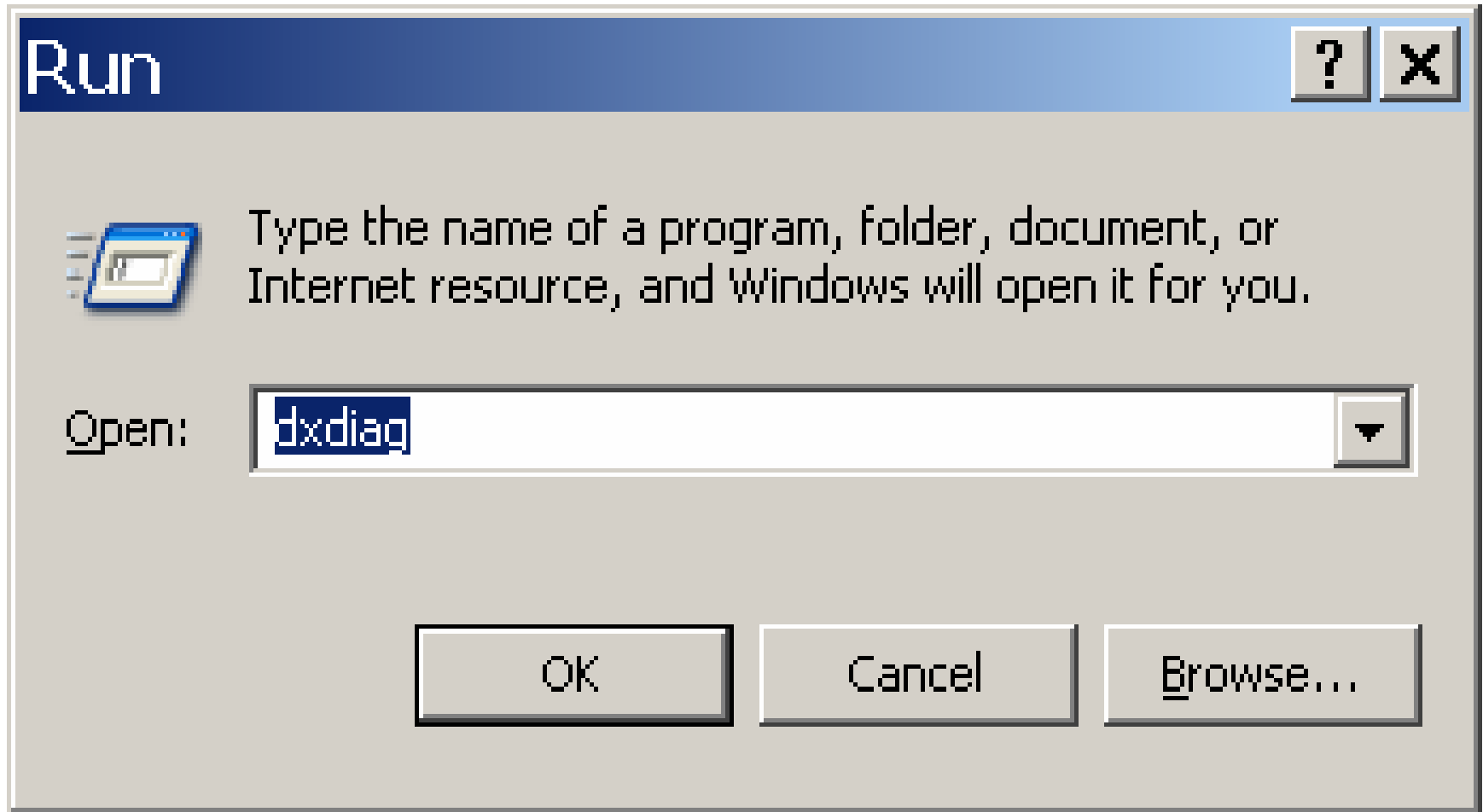


Checking Whether A Computer
Can Run River City
(this check does not check the
network or the computer
configuration)

At Start Menu, Select Run and type “dxdiag”



Look at System Tab

This tool reports detailed information about the DirectX components and drivers installed on your system. It lets you test functionality, diagnose problems, and change your system configuration to work best.

If you know what area is causing the problem, click the appropriate tab above. Otherwise, you can use the "Next Page" button below to visit each page in sequence.

The "More Help" page lists some other tools that may help with the problem you are experiencing.

System Information

Tells you what OS is running. Need Windows 2000 or XP

Current Date/Time: Monday, August 21, 2006, 12:27:31

Computer Name: L3-A5086

Operating System: Microsoft Windows XP Professional (5.1, Build 2600)

Language: English (Regional Setting: English)

System Manufacturer: LENOVO

System Model: 2007B49

BIOS: Phoenix FirstBIOS(tm) Notebook Pro Version 2.0 for ThinkPad

Processor: Genuine Intel(R) CPU T2600 @ 2.16GHz (2 CPUs)

Memory: Need to have at least 256MB RAM

Memory: 2046MB RAM

Page file: 597MB used, 3340MB available

DirectX Version: DirectX 9.0c (4.09.0000.0904)

Need to be running Version 8.1 or higher of Direct X

Check for WHQL digital signatures

Help

Next Page

Save All Information...

Exit

System | **DirectX Files** | **Display** | Sound | Music | Input | Network | More Help

Device

Name: ATI MOBILITY FireGL V5200
Manufacturer: ATI Technologies Inc.
Chip Type: ATI MOBILITY FireGL V5200 (0x71C4)
DAC Type: Internal DAC(400MHz)
Approx. Total Memory: 512.0 MB
Current Display Mode: 1024 x 768 (32 bit) (60Hz)
Monitor: ThinkPad Display 1400x1050

Drivers

Main Driver: ati2dvag.dll
Version: 6.14.0010.6587 (English)
Date: 12/21/2005 00:52:02
WHQL Logo'd: Yes
VDD: ati2mtag.sys
VDD: n/a
DDI Version: 9 (or higher)

Want memory ram to be 256 MB

Want these DirectX features to all be enabled

DirectX Features

DirectDraw Acceleration: Enabled

Disable

Test DirectDraw

Direct3D Acceleration: Enabled

Disable

Test Direct3D

AGP Texture Acceleration: Enabled

Disable

Notes

- No problems found.
- To test DirectDraw functionality, click the "Test DirectDraw" button above.
- To test Direct3D functionality, click the "Test Direct3D" button above.

If having technical issues we might ask you to click on "save all information" and email it to us.

Help

Next Page

Save All Information...

Exit